

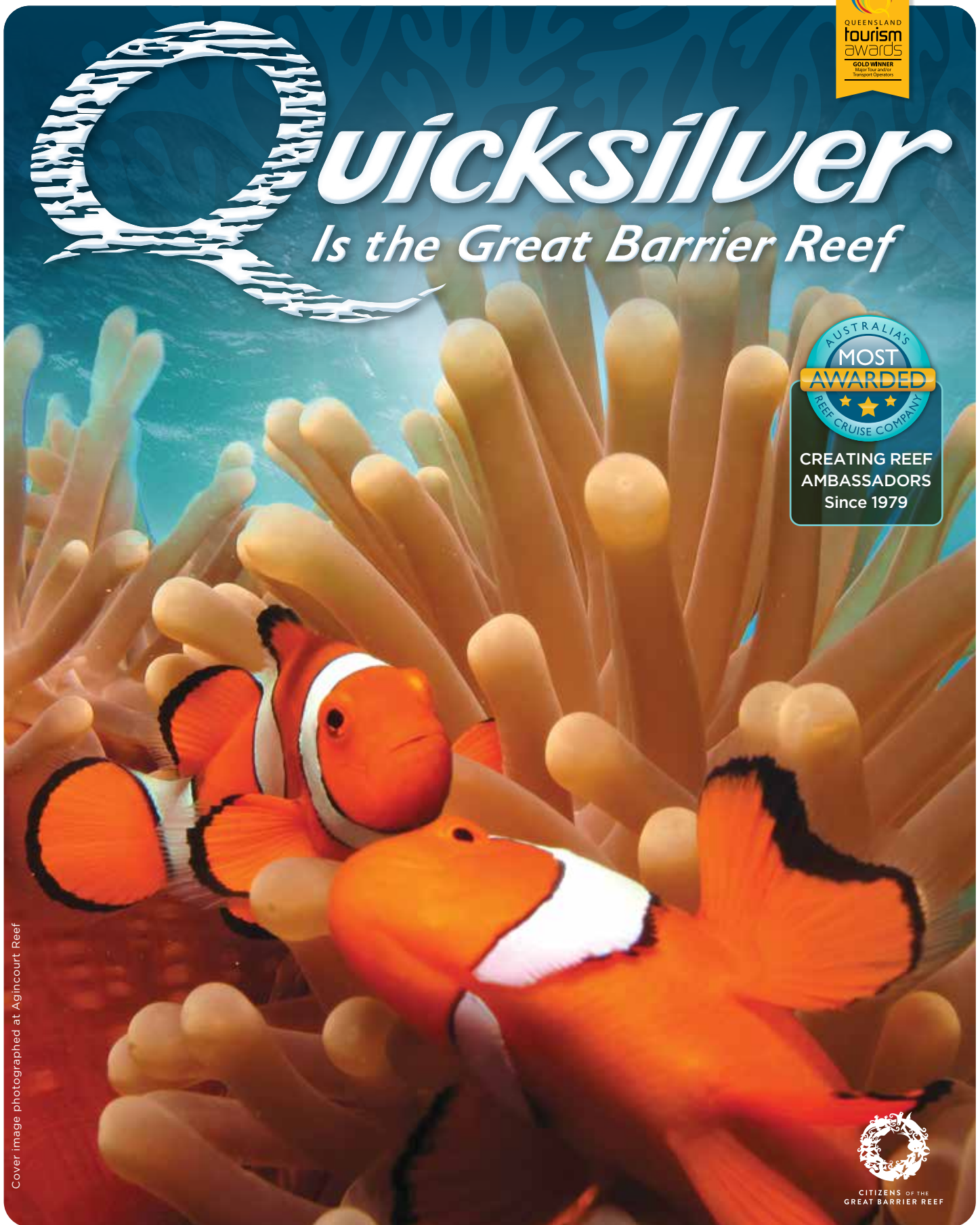


quicksilver

Is the Great Barrier Reef



Cover image photographed at Agincourt Reef



CITIZENS OF THE GREAT BARRIER REEF



Check out a day on Quicksilver

Agincourt Reef
Cairns » Northern Beaches » Port Douglas » Australia
quicksilver-cruises.com

@QuicksilverCruises

Outer Barrier Reef



It's a day that engages all of your senses.

Entering the dramatic beauty of the Great Barrier Reef is an extraordinary experience. It's a day that engages all your senses, lifts your spirit and takes you into another realm. Sharing the wonder of the world's largest living entity, realising its breathtaking majesty, seeing nature at its most perfect is an awakening and, quite simply, the memory of a lifetime.

The reef vibrates with the colours, stripes and shimmerings of a myriad of fishes. Butterfly fish, parrot fish, angel fish and elegant nudibranchs dance before your eyes and coral gardens beckon you to explore. Watch entranced as a clownfish snuggles into the embrace of a sea anemone. Float through billowing clouds of neon-coloured damsel fish.

A world of discovery awaits you at Agincourt Reef. Here at the very outer edge, the ocean waters surrounding these unique ribbon reefs are clear and pure. As an individual, you choose the way to experience this coral empire. Dive, snorkel, or just observe - it's your personal reef discovery. View from the underwater observatory or cruise just above the corals in a semi-submarine. Whether you choose to get wet or stay dry, you'll have the opportunity to experience the wonder of this incredible world.

Come, experience nature's finest with Australia's best.

Quicksilver
Is the Great Barrier Reef





Quicksilver takes you to Agincourt Reef, at the very outer edge of the Great Barrier Reef

Here, special reefs known as 'ribbons' run parallel to the Continental Shelf.

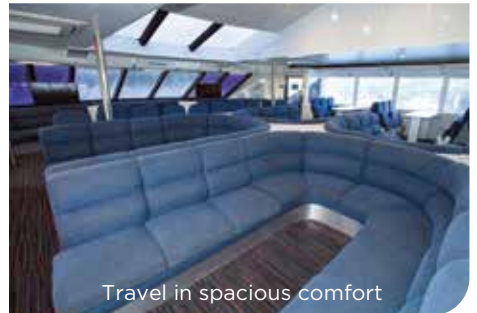
Adjacent to the Coral Sea trench, these ribbon reefs are recognised as the most pristine eco-systems in the reef's environment.

Clear water provides the best possible underwater visibility, encourages rich coral growth and supports spectacular marine life.

As the region's outer reef pioneer, we chose the best location available to show you nature's finest.

It still is today.

- ECO CERTIFIED**
advanced ecotourism
- CLIMATE ACTION CERTIFIED**
- MASTER REEF GUIDE**
GREAT BARRIER REEF
- GLOBAL SUSTAINABLE TOURISM COUNCIL**

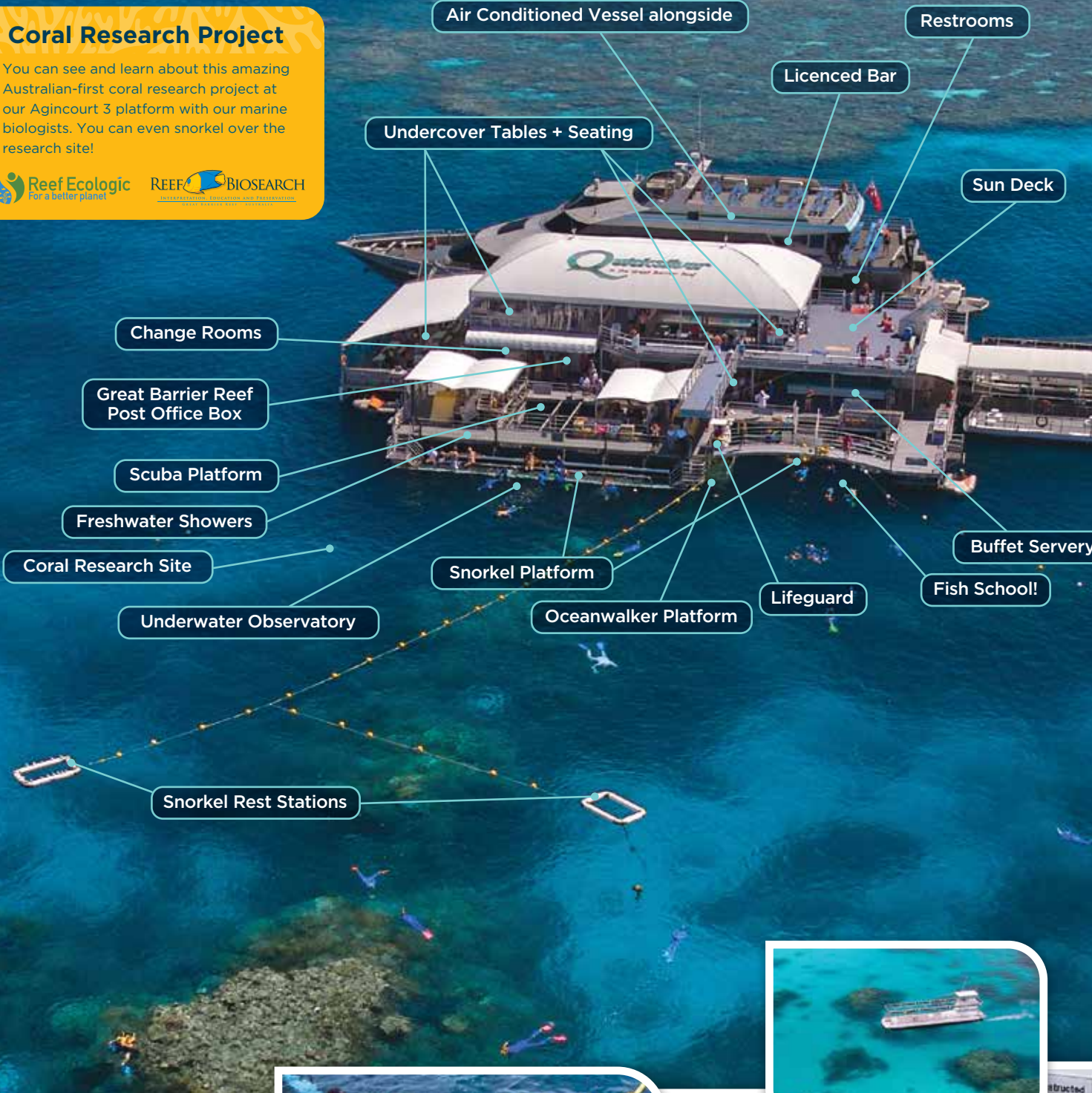


Travel in spacious comfort

"Agincourt Reef is the perfect place for your personal reef discovery"

Coral Research Project

You can see and learn about this amazing Australian-first coral research project at our Agincourt 3 platform with our marine biologists. You can even snorkel over the research site!



Underwater Observatory



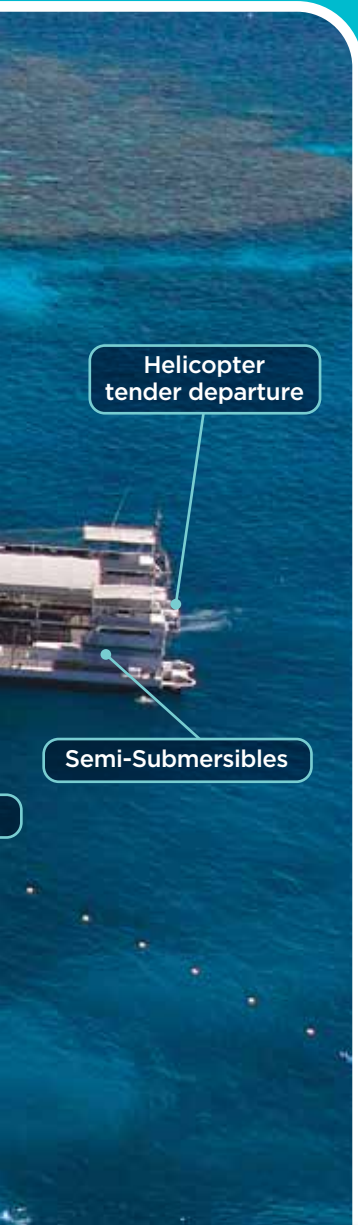
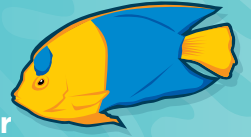
Our friendly crew are there to help you get the most from your day



Informative semi-submarine voyage around the coral reefs

Experience Nature's Finest.

With Australia's Best



Helicopter tender departure

Semi-Submersibles

★ Large, spacious and stable reef activity platform.

Our modern reef activity platform is the most spacious on the Great Barrier Reef, providing the best experience in all weather conditions while ensuring a comfortable and personal day.

Access to the water is so easy from the snorkel platforms and the special introductory dive area makes it a breeze for first time divers.

★ Smooth and spacious Wavepiercer cruising.

Your journey is as important as your destination, travelling in safety and air-conditioned comfort with first class service and facilities. Fast and luxurious, the spacious and technologically advanced wavepiercer ensures the smoothest journey.

★ Agincourt Reef is the true Outer Reef experience.

Only Quicksilver takes you to a reef activity platform where you can fully experience this most pristine ecosystem at the renowned Agincourt ribbon reef.

★ Discover with our Reef Biosearch Marine Biologists

Our team of university qualified marine biologists are dedicated to turning the ocean into a classroom and educating about this magnificent watery wonderland. Meet them onboard and throughout the day to answer your questions.

★ It's Personal!

From coaches, to cruises, to crew, it's a day that's all about you. With a high crew/guest ratio we are at your service!

★ Eco Stewardship



Recognised as a High Standard Operator with the highest Ecotourism Accreditation, Climate Action Certification and our own Reef Biosearch environmental division, we are committed to the protection of the Great Barrier Reef, and that you really do experience Nature's finest! Scan the code to learn more about our sustainability initiatives and eco stewardship.



★ Included in your day Experience, Learn, Enjoy!

- » Return Wavepiercer cruise from Port Douglas to our exclusive activity platform on Agincourt Reef.
- » 3.5 hours at Agincourt Reef Activity Platform.
- » Informative marine biologist Reef Interpretation Presentation.
- » Semi-submarine Reef Discovery Voyage with interpretation. Cruise as often as you like!
- » Underwater observatory fish and coral viewing.
- » Fish School! See the fish feeding and reef fish identification session.
- » All snorkelling equipment & instruction provided
- » Buoyancy vests and flotation noodles.
- » Lycra suits.
- » Qualified lifeguard supervision.
- » Morning and afternoon teas on board. Cheese and crackers on homeward journey.
- » Hot and cold tropical buffet lunch with prawns. Lunch is prepared daily from our Quicksilver kitchen with fresh local produce.



ECO TIP Recycle and refill your drink container from water fountains onboard or on the platform



Send a postcard from Australia Post's most remote post box right here at Agincourt Reef!



Enjoy a sumptuous buffet lunch from the comfort of tables located on the platform or onboard

OPTIONAL ACTIVITIES

More ways to discover!

In addition to your cruise fare, these exciting optional activities are available for your enjoyment and to maximise your reef experience. Optional activities should be pre-booked to ensure availability.



Reef Biosearch Snorkel Excursion

Join our passionate and knowledgeable Reef Biosearch marine biologists on this engaging, interactive and fun snorkelling excursion. Part of a small group (maximum 10 people), you'll be introduced to an exciting underwater world as you discover beautiful coral gardens and some of the most fascinating and sometimes quirky creatures that call the vibrant Agincourt reefs home. Learn, be inspired and become an ambassador for Reef protection.

Some snorkelling experience is recommended and participants should be confident in the water. All equipment is provided.

Advanced: Adult \$96 Child \$48 Family \$240

Introductory: Adult \$76 Child \$42 Family \$194

★ Quicksilver's Reef Biosearch was founded back in 1986 to focus on reef interpretation, education and preservation. Proudly, we hold the longest ongoing marine observations on the reef which became the precursor to the Great Barrier Reef Marine Park Authority's "Eye on the Reef" program.



Ocean Walker - Helmet Diving

A unique and fun experience, see the reef up close during a helmet "dive". Breathing fresh air delivered from the surface into your helmet, you will walk underwater on a reef platform - you can even wear your glasses if you wish! Oceanwalker is suitable for non-swimmers and persons aged over 12 years. After a short briefing and subject to medical conditions, you will be amongst the reef fish and corals.

\$194 per person (equipment provided)



Scuba Diving

Introductory Diving (No prior experience necessary)

\$194 per diver (equipment provided)

Scuba diving is certainly one of the most memorable and exciting ways to experience the awe-inspiring wonder of the Great Barrier Reef. From our specially designed dive platform it couldn't be easier with a fully supervised introductory dive! With an experienced dive instructor by your side, you'll be guided on an amazing underwater adventure. Medical conditions apply and minimum age is 12 years.

Certified Diving

1 Dive - \$144 per diver (equipment provided)

2 Dives - \$206 per diver (equipment provided)

Scuba diving right at the edge of Australia's continental shelf is simply spectacular. At these unique ribbon reefs, visibility is excellent and the variety of marine life is exceptional. All dives are guided.

Certified divers must present proof of certification.



Scenic Helicopter Flight

10 minute Reef Scenic Flight - \$199 per person

For a different and spectacular perspective of the jewel-like ribbon reefs, an exciting ten minute helicopter flight is available from the platform moored at Agincourt Reef.

Outer Reef Cruise & 10 minute Scenic Flight PACKAGE & SAVE \$29 Adult!

Adult \$468 Child \$340

Price is ex Port Douglas Marina. Helicopter availability subject to operating conditions and maximum loads.

Advice for Water Activities The minimum age for scuba diving and Oceanwalker is 12 years, however some older age persons may require a doctor's certificate. Certain medical conditions, medications and height restrictions may preclude some people from participating in optional in-water activities. For advice and more information, contact our office or see our website. After a single dive a wait of 12 hours is recommended before ascending to an altitude of 300 metres or greater. An interval of 24 hours is suggested for multiple dives.

Snorkelling can be a strenuous activity. Please use caution and inform our crew of any medical conditions.

CRUISE & HELI PACKAGE



Fly one way, Cruise one way! Heli & Cruise Package

See the wonders of the Great Barrier Reef from above and below by combining a scenic helicopter journey with your Quicksilver cruise. Enjoy all the inclusions of our Outer Reef Cruise PLUS choose to fly one way to or from the Reef and cruise the other aboard our spacious wavepiercer.

Nautilus Aviation's experienced pilots will take you on an exhilarating flight as you soar above two World Heritage icons - where the rainforest meets the reef. See vast coral formations, marine life and the kaleidoscope of patterns at the reef's outer edge. An ideal start or finishing touch to your day.

Return Coach Transfers Available	From Port Douglas, Cairns & Nth Beaches	Per Person
	Cruise/Fly	\$669
	Fly/Cruise	\$669

Helicopter departs from and returns to Port Douglas. Return coach transfers are available. If you would like to scuba dive, you will need to choose the Cruise/Fly option.





What to bring.

- » Swimwear and towel
- » Hat and shirt for sun protection. We recommend marine-friendly sunscreen.
- » Camera. Underwater cameras are available to hire. Drones are not permitted.
- » Professional photo service available onboard (additional cost).
- » Cash or credit card for optional tours or purchases at the bar.

What you'll gain.

- » At Quicksilver, we would like all of our guests to leave us as ambassadors for reef protection and preservation.

Travelling to Agincourt Reef is one of the many highlights of your Quicksilver day. Our coach connections make it so easy.

Our luxury, air-conditioned coaches will collect you from your accommodation with times advised at time of booking.

From Cairns & Beaches

Enjoy an informative, picturesque tour along the **Great Barrier Reef Drive**, one of Australia's most beautiful scenic coastal roads, to join your cruise vessel in Port Douglas.

From Port Douglas

Coach transfers are available or choose to stroll to the Marina.



Outer Great Barrier Reef Cruise

In Australian Dollars. Valid to 31 March 2024

	Adult	Child	Family
From Crystalbrook Marina Wharf Street, Port Douglas.	\$298	\$156	\$760

Child: 4 - 14 years inclusive. Under 4 years travel FREE.
 Family: Maximum of 2 adults and 2 children. Normal fare applies for additional children. Not applicable with any other discount.

With our Family Fare one Child cruises for free! Save \$148!

Return Coach Transfers are available or choose to stroll to the Marina.

	Adult	Child	Family
Port Douglas & Thala Beach	\$22	\$11	\$55
Cairns & Beaches Scenic Tour	\$39	\$22	\$100

EMC : A Government Environmental Management Charge is levied for all adults and children 4 years and over entering the Great Barrier Reef World Heritage Area. If applicable, this charge is included in the tour price.

Additional Cost - Surcharge: Due to potential significant volatility in supply and operational costs, a surcharge may be applied due to unforeseen circumstances. In such cases, any charge will be collected on departure.

Check - In

Passengers must check-in at Quicksilver's Reservations counter inside the Port Douglas Marina to obtain boarding passes.

Daily Departures

Boarding Time 9.30am
 Departs Port Douglas Marina at 10am

BOOK ONLINE or CALL (07) 4087 2100

Email: reservations@quicksilver-cruises.com

Book at your travel agent, local tour desks or accommodation. Cancellation fees may apply, please check at time of booking.

On very rare occasions all cruise services can be subject to the effect of weather or unforeseen circumstances. Should a cruise not operate for any reason passengers will be offered an alternative day or a refund authorised.

Quicksilver Connections Ltd
 ABN 26 010 434 269.
 Crystalbrook Superyacht Marina,
 Port Douglas. Qld 4870 Australia.

www.quicksilver-cruises.com



PART OF THE
QUICKSILVER
 GROUP

AUSTRALIA'S MOST AWARDED REEF CRUISE COMPANY.
 PROUDLY SUPPORTING OUR COMMUNITY AND LOCALLY
 OPERATED SINCE 1979. QUICKSILVERGROUP.COM.AU



PLEASE RECYCLE
 THIS BROCHURE

DECOYDESIGN

STOP SINGLE USE PLASTICS. TOGETHER OUR ACTIONS CAN MAKE A DIFFERENCE FOR OUR ENVIRONMENT.